

BALDOR® • RELIANCE 

Product Information Packet

VJPFPM2549T-2/4

75HP,3535RPM,3PH,60HZ,364JP,4250M,OPSB,F

Part Detail							
Revision:	C	Status:	PRD/A	Change #:		Proprietary:	No
Type:	AC	Elec. Spec:	42WGW982	CD Diagram:	CD0104	Mfg Plant:	
Mech. Spec:	42E361	Layout:	42LYE361	Poles:	02	Created Date:	03-20-2017
Base:	N	Eff. Date:	11-07-2019	Leads:	12#6		

Specs			
Catalog Number:	VJPFPM2549T-2/4	Inverter Code:	Not Inverter
Enclosure:	OPSB	KVA Code:	F
Frame:	364JP	Lifting Lugs:	Vertical Lifting Lugs
Frame Material:	Steel	Locked Bearing Indicator:	Locked Bearing
Output @ Frequency:	75.000 HP @ 60 HZ	Motor Lead Quantity/Wire Size:	12 @ 6 AWG
Synchronous Speed @ Frequency:	3600 RPM @ 60 HZ	Motor Lead Exit:	Ko Box
Voltage @ Frequency:	200.0 V @ 60 HZ	Motor Lead Termination:	Flying Leads
	400.0 V @ 60 HZ	Motor Type:	4250M
Agency Approvals:	UL	Mounting Arrangement:	F1
	CSA EEV	Power Factor:	90
Auxillary Box:	No Auxillary Box	Product Family:	Fire Pump Motor
Auxillary Box Lead Termination:	None	Pulley End Bearing Type:	Ball
Base Indicator:	No Mounting	Pulley Face Code:	C-Face
Bearing Grease Type:	Polyrex EM (-20F +300F)	Pulley Shaft Indicator:	Tapped & Key
Blower:	None	Rodent Screen:	Included
Current @ Voltage:	192.000 A @ 200.0 V	Shaft Extension Location:	Pulley End
	96.000 A @ 400.0 V	Shaft Ground Indicator:	No Shaft Grounding
Design Code:	B	Shaft Rotation:	Reversible

Drip Cover:	Drip Cover	Shaft Slinger Indicator:	Shaft Slinger
Duty Rating:	CONT	Speed Code:	Single Speed
Electrically Isolated Bearing:	Not Electrically Isolated	Motor Standards:	NEMA
Feedback Device:	NO FEEDBACK	Starting Method:	Wye Start - Delta Run
Front Face Code:	Standard	Thermal Device - Bearing:	None
Front Shaft Indicator:	None	Thermal Device - Winding:	None
Heater Indicator:	No Heater	Vibration Sensor Indicator:	No Vibration Sensor
Insulation Class:	F	Winding Thermal 1:	None
		Winding Thermal 2:	None

Nameplate NP3454L											
CAT.NO.	VJPFPM2549T-2/4			CUST P/N				I.P.	23		
SPEC.	42E361W982H2			SER.NO.				FRAME	364JP		
HZ	60	HP	75	RPM	3535	HZ		HP		RPM	
VOLTS	200/400			CODE	F	VOLTS				CODE	
AMPS	192/96			DES	B	AMPS				DES	
EFF	93	SER.F.	1.15	PF	90	EFF				SER.F.	
RATING	40C AMB-CONT			DE BRG	6313	GREASE	POLYREX EM				
BLANK				ODE BRG	6311	MTR. WT.	472				
				CLASS	F	PH	3				
				ENCL	OPSB	CC	010A				
HTR-VOLTS		HTR-AMPS		HTR-WATTS							

Parts List		
Part Number	Description	Quantity
SA336197	SA 42E361W982H2	1.000 EA
RA324430	RA 42E361W982H2	1.000 EA
HA6360	LIFTING LUG FOR 42 FRAME MOTORS.	2.000 EA
HA6017	CAST ADAPTER, 40,42 KOBX	1.000 EA
19XW3118A12	.31-18 X .75 HEX WASHER HEAD TAPTITE II	2.000 EA
HW1001A31	LOCKWASHER 5/16, ZINC PLT.591 OD, .319 I	2.000 EA
12CB1002A48	CONDUIT BOX, W/3.62 DIA. LEAD HOLE	1.000 EA
19XW3118A16	.31-18 HEX WASHER HEAD TAPTITE II 1.00 L	4.000 EA
HW1001A31	LOCKWASHER 5/16, ZINC PLT.591 OD, .319 I	4.000 EA
WD1000B53	TERMINAL BURNDY KPA34	1.000 EA
10XN5013K10	1/2-13 X .625 HEX HD, GRADE 5	1.000 EA
HW1001A50	LOCKWASHER 1/2, ZINC PLT.,.879 OD, .509 I	1.000 EA
42EP3200A02	FR ENDPLATE, MACH	1.000 EA
HA1108A01	RODENT SCREEN	1.000 EA
51XW1032A06	10-32 X .38, TAPTITE II, HEX WSHR SLTD S	4.000 EA
HW5100A13	W4627-047 WVY WSHER	1.000 EA
42EP1400A03	PU ENDPLATE, MACH W/ RODENT SCREENS	1.000 EA
HA1165A02	RODENT SCREEN FOR 42 PU. C-FACE E.P.	1.000 EA
51XW1032A06	10-32 X .38, TAPTITE II, HEX WSHR SLTD S	1.000 EA
10XN3816K56	3/8-16 X 3 1/2 HEX HEAD MACHINE SCREW,	4.000 EA
HW1001A38	LOCKWASHER 3/8, ZINC PLT .688 OD, .382 I	4.000 EA
HA7204	"L" SHAPE LIFTING LUG FOR 42 FRAME MOTOR	2.000 EA
XY5013A12	NUT,1/2-13,HEX,STEEL,ZINCPLATED	8.000 EA
42FH2500A01	DRIP COVER MOD 42 OPEN	1.000 EA

Parts List (continued)		
Part Number	Description	Quantity
10XN2520K12	1/4-20 X.75 GRD 5	4.000 EA
HW1001A25	LOCKWASHER 1/4, ZINC PLT .493 OD, .255 I	4.000 EA
18CB1501A01	CONDUIT BOX LID, MODEL 318 OPEN	1.000 EA
10XN3118K16	5/16-18 X 1' GRADE #5, STL, ZINC PLATE	4.000 EA
HW1001A31	LOCKWASHER 5/16, ZINC PLT.591 OD, .319 I	4.000 EA
HW4600B82	V-RING SLINGER 2.500 X 2.900 X .28 VITON	1.000 EA
HW2501G18	SQUARE STEEL KEY .375 X 2.00 LONG	1.000 EA
LB1115N	LABEL,LIFTING DEVICE (ON ROLLS)	1.000 EA
LB1182	WARNING LABEL FOR MOTORS WITH EYENUTS	1.000 EA
HA4051A00	PLASTIC CAP FOR GREASE FITTING	1.000 EA
HW4500A03	GREASE FITTING, .125 NPT 1610(ALEMITE) 8	1.000 EA
HW4500A17	317400 ALEMITE GREASE RELIEF	1.000 EA
MJ1000A02	GREASE, MOBIL POLYREX EM - 124047	0.030 LB
HA4051A00	PLASTIC CAP FOR GREASE FITTING	1.000 EA
HW4500A03	GREASE FITTING, .125 NPT 1610(ALEMITE) 8	1.000 EA
HW4500A17	317400 ALEMITE GREASE RELIEF	1.000 EA
MG1025R44	WILKOFASST, 784.109, CARMINE RED #3002	0.050 GA
85XU0407S04	4X1/4 U DRIVE PIN STAINLESS	4.000 EA
HA3151A07	THRUBOLT STUD 1/2-13 X 20.000	4.000 EA
42AD2001C01	BAFFLE PLATE 42 OPEN, SLOTTED BAND MTRS	1.000 EA
42AD2001C01	BAFFLE PLATE 42 OPEN, SLOTTED BAND MTRS	1.000 EA
LB1119N	WARNING LABEL	1.000 EA
LC0104A01	CONNECTION DIAGRAM	1.000 EA
NP3454L	ALUM FIRE PUMP MOTOR(LEGACY/BALDOR ONLY)	1.000 EA

44PA1000	PK GP COMB PRINT 39-3/8X31X23-7/8	1.000 EA
MN416A01	TAG-INSTAL-MAINT no wire (1200/bx) 3/19	1.000 EA

AC Induction Motor Performance Data

Record # 54842 - Typical performance - not guaranteed values

Winding: 42WGW982-R001	Type: 4250M	Enclosure: OPSB
-------------------------------	--------------------	------------------------

Nameplate Data				400 V, 60 Hz: High Voltage Connection	
Rated Output (HP)	75			Full Load Torque	112 LB-FT
Volts	200/400			Start Configuration	direct on line
Full Load Amps	192/96			Breakdown Torque	381 LB-FT
R.P.M.	3535			Pull-up Torque	111 LB-FT
Hz	60	Phase	3	Locked-rotor Torque	148 LB-FT
NEMA Design Code	B	KVA Code	F	Starting Current	585 A
Service Factor (S.F.)	1.15			No-load Current	22.7 A
NEMA Nom. Eff.	93	Power Factor	90	Line-line Res. @ 25°C	0.0688 Ω
Rating - Duty	40C AMB-CONT			Temp. Rise @ Rated Load	41°C
S.F. Amps				Temp. Rise @ S.F. Load	51°C
				Locked-rotor Power Factor	21.1
				Rotor inertia	3.91 LB-FT ²

Load Characteristics 400 V, 60 Hz, 75 HP

% of Rated Load	25	50	75	100	125	150	S.F.
Power Factor	67	84	89	90	90	89	90
Efficiency	92.4	94.6	94.4	94	93	91.3	93.4
Speed	3585	3572	3556	3539	3518	3496	3526
Line amperes	32.5	51	72.4	96.4	122	149	112

Performance Graph at 400V, 60Hz, 75.0HP Typical performance - Not guaranteed values

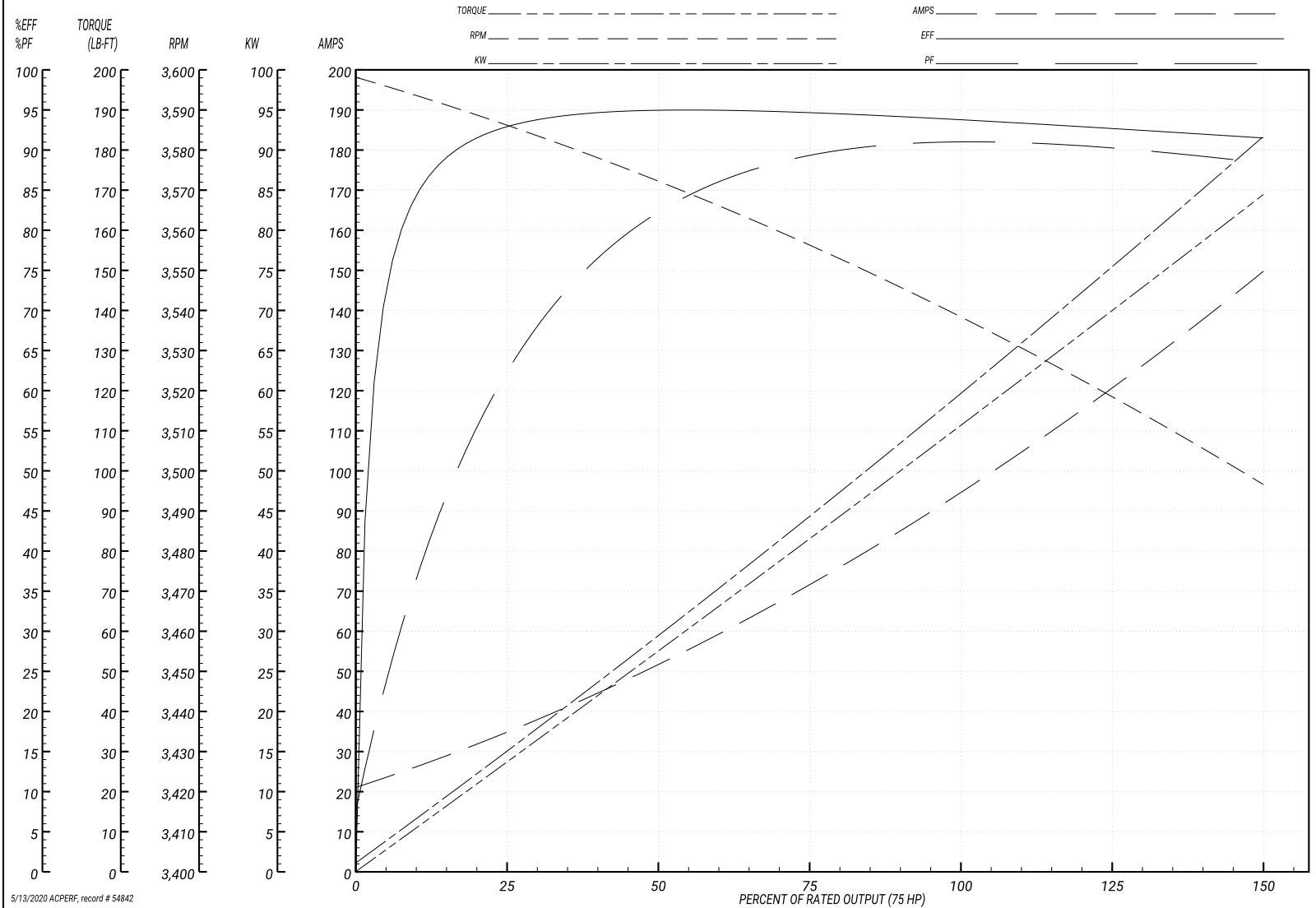
ABB Motors and Mechanical Inc.

WINDING # 42WGW982

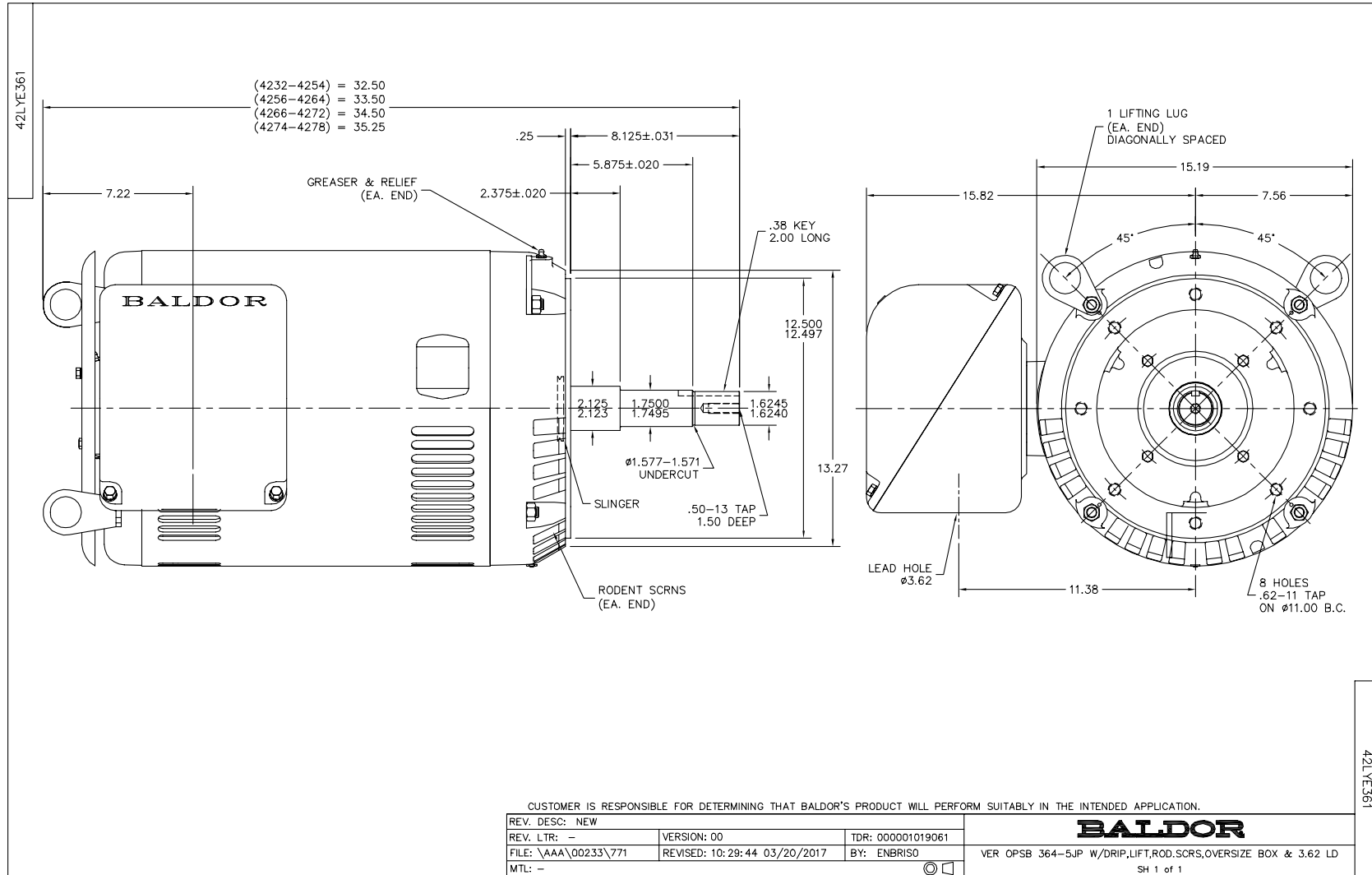
Typical performance - not guaranteed values.

75 HP 3 PH 60 HZ 3535 RPM 400 V 4250M

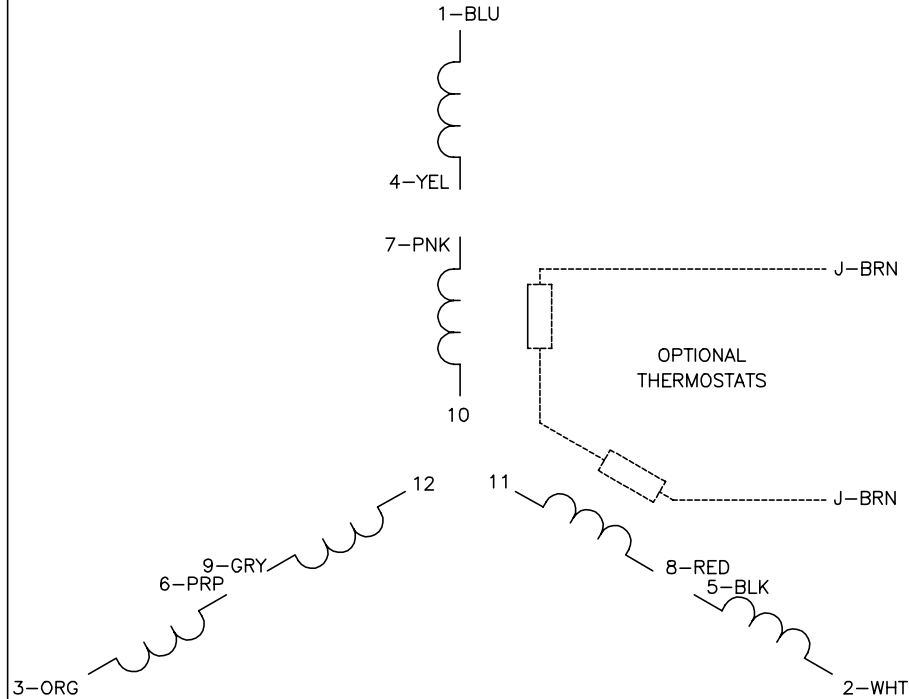
TORQUES(LB-FT): PO=381 PU=111 LR=148 LRA=585



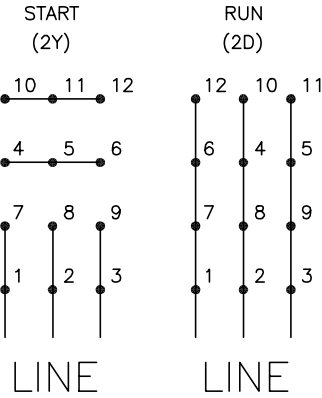
5/13/2020 ACPERF, record # 54842



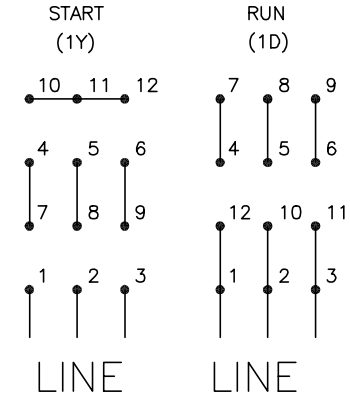
CD0104



LOW VOLTAGE



HIGH VOLTAGE



NOTES:

1. INTERCHANGE ANY TWO LINE LEADS TO REVERSE ROTATION.
2. OPTIONAL THERMOSTATS ARE PROVIDED WHEN SPECIFIED.
3. ACTUAL NUMBER OF INTERNAL PARALLEL CIRCUITS MAY BE A MULTIPLE OF THOSE SHOWN ABOVE.
4. LEAD COLORS ARE OPTIONAL. LEADS MUST ALWAYS BE NUMBERED AS SHOWN.

CD0104

REV. DESC: ADD CLASS CONN00000007		
REV. LTR: D	VERSION: 01	TDR: 000001099922
FILE: \AAA\00008\377	REVISED: 09:02:55 02/19/2019	BY: ENBRIRO
MTL: -	© □	

BALDOR - RELIANCE®

3PH, DV, 12 LEADS, Y START/D RUN

SH 1 of 1

Marketing maintained PDF of MN416:

<http://www.baldor.com/support/Literature/Load.ashx/MN416?ManNumber=MN416>